



By Mike Wade,
President & CEO

WEST RIVERSIDE ENERGY CENTER OWNERS

I sometimes write parts of my column in advance of events due to the timing of the magazine. Because of this, as I am writing my column now, I sincerely hope by June we have had our 80th annual meeting! As you know, our annual meeting was scheduled for April 14 and as it happened, many of you received 20–25 inches of snow that weekend. I woke up to 10.5 inches of snow that Saturday morning and my street was not plowed until the afternoon. Streets and roads were impassible due to the snow, so the cooperative had no choice but to cancel the meeting. The meeting was rescheduled for the evening of Tuesday, May 22, and a letter went out to each member containing the new meeting information. In our July magazine, we will report the


outcome of that meeting.

Please read this month's article on the West Riverside Energy Center. This new power plant represents a tremendous opportunity for the cooperative to lower our power cost to the membership. And not just for the short term, but for years to come. This month's article will provide you with basic information about the new plant, but we will have future articles that describe the cost savings we will receive because of our partial ownership.

Back in March, the board of directors approved a plan to partner with four other electric cooperatives in Wisconsin to share regulatory compliance services. As an electric utility, we are subject to a host of state and federal regulations and compliance is mandatory. These regulations are designed to keep our employees and the general public safe, and it is our



**Central Wisconsin
Electric Cooperative**

Your Touchstone Energy® Cooperative 

goal to be 100 percent compliant. We have begun the new partnership and are pleased with the results so far. This is another great example of the 6th cooperative principle, which is "Cooperation among Cooperatives."

Although I never thought the snow would melt, I hope you are spending time outdoors and are making your summer plans. Enjoy your summer fun because it will pass all too quickly. Be safe in your travels.

ELECTRICAL SAFETY TIP OF THE MONTH

Never climb a utility pole or tower. The electricity carried through this equipment is high voltage and could kill you.

BOARD MEETING SUMMARY

A regular meeting of the Board of Directors of Central Wisconsin Electric Cooperative was held at the headquarters in Rosholt at 8:15 a.m. on March 23, 2018. The following is a summary of the meeting activities. The agenda, minutes of the February 22, 2018 meeting, new and terminated memberships, and the monthly safety report were approved.

Action Items

- a. Monthly Financial Statements and Reports were approved. Finance Committee reviewed checks written and the board and CEO expenses.
 - b. The board approved proposed changes to Board Policy 202 – Director Fees and Expenses.
 - c. The board approved the Federated Youth Foundation donations for the year as well as the donations to be included with the CoBank Sharing Success Program application.
 - d. The board approved the proposed 2018 CWEC Annual Meeting Agenda.
 - e. The board approved a joint agreement with Dunn, Pierce-Pepin, St. Croix, and Barron electric cooperatives to share regulatory compliance services.
 - f. The board approved a new industrial service rate for service locations in excess of 1,000 kW.
 - g. The board approved the second American Transmission Company (ATC) capital call of 2018.
 - h. The board voted not to send a director to the Dairyland Power Cooperative Annual Meeting in June 2018.
- Operations and Engineering – Hazard Recognition Inspection continues. Staff met regarding concerns and issues with regulatory compliance. Strict adherence to regulatory requirements is critical for ensuring we are operating safely and efficiently.
- Accounting and Finance – We completed our 2017 annual financial audit.
- Member Relations – We are preparing for our 80th Annual Meeting of CWEC, which will be held at the Rosholt High School Saturday, April 14, 2018. Member relations and operations staff are working on a new home energy audit program.
- President and CEO Report – CH Guernsey will prepare a monthly financial profile for us. This will provide a different look at our financials than what we typically see.
- Directors reported on the recent employee/safety meeting, the NRECA Annual Meeting, and the service excellence training they attended at the CWEC headquarters along with the employees.
- Directors discussed the bi-annual CWEC Town Chairmen's Meeting held at the headquarters March 22, 2018, which provides updates to all townships in our service territory.
- Meeting adjourned at 1:57 p.m.



ROCKING TO RETIREMENT

“Keep filling your bucket,” heat pump technician Tim Kraft says to me, pointing at his head.

Getting Tim to talk about himself and his accomplishments proves to be quite a challenge, because in his mind, his job has always been about the member, and never himself. Tim understands the nature of the cooperative, and knows that the member always comes first. Now that he has decided to retire, we have the opportunity to shine light on a man whose good work often goes unspoken.

From a young age, Tim knew he wanted to help people. Growing up in Green Bay, Tim was a cadet for the police department. In this field, a lot of his work involved taking and filing complaints. After a few different jobs, including rudimentary factory work, he realized that he had an interest in power and installation. He went on to pursue a degree in refrigeration from Wausau Technical College.

In 2001, an opportunity to work at Central Wisconsin Electric Cooperative appeared in *The Northerner* newspaper. Tim inquired about the job, and the rest is history.

While at the cooperative, Tim has handled the installation of heating pumps, loop fields, and other miscellaneous appliances for our



members. Additionally, he has worked on load management, energy audits, and meter work.

Tim has a passion for helping people, and the fruits of his labor lie within the fact that after he makes an installation, he rarely has to return to repair any

**...the pride he takes
in his work leads to
great results.**

mistakes, simply because the pride he takes in his work leads to great results.

Tim has stacks of books related to geothermal heating, installation, and refrigeration throughout his office, and while it may seem like rocket science

to anyone without his expertise, it has become second nature for him. Tim’s ability to decipher the complexity of this line of work would be for nothing if not for his interest in solving our members’ problems.

With retirement on his doorstep, Tim looks forward to moving closer and spending more time with his wife. He will continue to enjoy his rock concerts, and plans on spending a lot more time fishing. No matter which avenue of life he chooses to pursue, we are all confident that he will be happy and successful.

From all of us here at Central Wisconsin Electric Cooperative, we would like to sincerely thank Tim Kraft for all of his hard work and dedication. This cooperative would not be the same without you. Thank you, Tim!

**Know what's below.
Call before you dig.**



WEST RIVERSIDE ENERGY CENTER

Central Wisconsin Electric Cooperative (CWEC) has partnered with two Wisconsin electric cooperatives to own a portion of the new West Riverside Energy Center that is under construction near Beloit, Wis. Along with Rock Energy Cooperative and Adams-Columbia Electric Cooperative, CWEC has been working with Alliant Energy to negotiate a new wholesale power supply agreement that includes partial ownership of the new energy center.

West Riverside Energy Center is a 726 MW (mega-watt) natural gas combined cycle power plant that will be operated and primarily owned by Alliant Energy. The construction of the new energy center is estimated at \$700 million. The three electric cooperatives will own a total of 60 MW or about 8.2 percent of the facility. CWEC will have



the smallest ownership level at 5 MW or 0.7 percent.

“This has been an exciting project for the three cooperatives and we are looking forward to the completion and commercial operation of West Riverside,” said Mike Wade, president and CEO of CWEC. “Our level of ownership in the new plant will benefit our members by lowering our overall wholesale power cost. We are grateful

to our wholesale partner, Alliant Energy, for including us in this project.”

West Riverside is currently under construction and is approximately 32 percent complete. The facility is estimated to be completed by early 2020. Over 600,000 craft hours have been worked at the site so far. Once completed, West Riverside will have the capacity to serve approximately 550,000 homes.

ENJOY THE CONVENIENCE OF THE AUTOMATIC PAYMENT PLAN

Sign up and receive a \$20 credit on your electric bill!



Credit is for first-time participants only. The Automatic Payment Plan option allows transfer of funds from your checking, savings, or credit card account directly to Central Wisconsin Electric Cooperative’s account to pay your electric bill. A direct withdrawal would be made on the due date of each month for the amount of your bill.

If you are interested in participating in this convenient payment method, please fill out the form at right and return it to our office with the required information.

I want to participate in the Automatic Payment Plan

Name(s) on CWEC Bill _____

CWEC Account Number _____

Billing Address _____

City _____ State _____ Zip Code _____

Work Phone _____ Home Phone _____

If your payment is to be charged to your credit card write your credit card number and expiration date below.

Your Credit Card Number _____ exp. date _____

If your payment is to be delivered from a checking account, enclose a blank check. Write VOID across it and DO NOT SIGN IT.

If your payment is to be deducted from a savings account, enclose a deposit slip that includes your account number. Please allow one month for the setup of the Automatic Payment Plan.

CWEC has the right to cancel use of the Automatic Payment Plan. I will write to CWEC if I decide to cancel my use of the Automatic Payment Plan.

Account Holder(s) _____

Signature _____ Date _____

Note: Only first-time participants are eligible for a one-time \$20 credit. Member must remain on the Automatic Payment Plan for a minimum of 12 months. Mail this form with your current payment or mail it separately to CWEC, P.O. Box 100, Rosholt, WI 54473. For more information, call 715-677-2211 or 800-377-2932.



DATES TO REMEMBER IN JUNE

Wittenberg Community Days

Saturday, June 9 & Sunday, June 10
Saturday—Kids Again Inflatable Fun, 3–7 p.m.; music, 7–11 p.m. fireworks show at dusk. Sunday—parade at noon. Washington Park, Wittenberg. For more information go to www.wittenbergchamber.org.

Walls of Wittenberg Presents: "Emerging Talent V"

Saturday/Sunday, June 9–24
Reception on Sunday, June 10, following the Wittenberg Community Days parade. An exhibit of original art by Wittenberg-Biramwood students grades K–12. Show opens 11 a.m.–3 p.m. each day. WOWSPACE 114 Vinal St., Wittenberg. For more information call 715-253-3525 or visit www.wallsowittenberg.com.

Walls of Wittenberg, "Second Tuesday Concert Series"

Tuesday, June 12
6–8 p.m. The Allen Brothers Band, playing popular songs from the '60s to today. WOW Art Park, 114 Vinal St., Wittenberg. Free concert and ice cream. In case of rain concert held in WOWSPACE. For more information visit www.wallsowittenberg.com or call 715-253-3525.

Flag Day Thursday, June 14



**29th Annual Energy Fair
Friday, June 15–Sunday, June 17**
Friday & Saturday: 9 a.m.–11 p.m., Sunday: 9 a.m.–4 p.m. Located at the Midwest Renewable Energy Association in Custer. Over 250 exhibitors and

To submit your events email brenda.mazemke@cwecoop.com or call Brenda at 715-677-2211.

workshops on sustainable living, renewable energy, and energy efficiency. Keynote speakers, Clean Transportation Show, green building demos, live music, local food. Save with advanced tickets. Volunteers, members, and kids under 12 get in free. For more information, go to www.TheEnergyFair.org or call 715-592-6595.

Father's Day Sunday, June 17





**Vacation Bible Day Camp
June 25-29**
Mon.–Thur. 9 a.m.–3 p.m.; Friday 9 a.m.–noon. Faith Lutheran Church. Snacks and lunch are provided daily. Open to all 1st through 6th grade children; all are welcome. For more information call Faith Lutheran Church office, 715-677-4631, or visit www.faithandnewhope.com. Rosholt.

**34th Annual Strawberry Fest
Sunday, June 24**
11 a.m.–4 p.m. Raffle tickets available \$2 each or three for \$5. First place \$500 cash prize and many other prizes. Iola Historical Society, Iola. For more information call 715-445-10LA (4652) or visit www.iolahistoricalsociety.org.

**1st Annual Corn Roast Classic Golf Scramble
Saturday, June 30**
10 a.m., shotgun start, four-person teams, hole prizes, dinner after, raffles prizes. Glacier Wood Golf Course, Iola. Sponsored by Scandinavia Booster Club. Register team and dinner guests by June 22. For more information email scandinaviaboosterclub@gmail.com.

Mike Wade, President & CEO

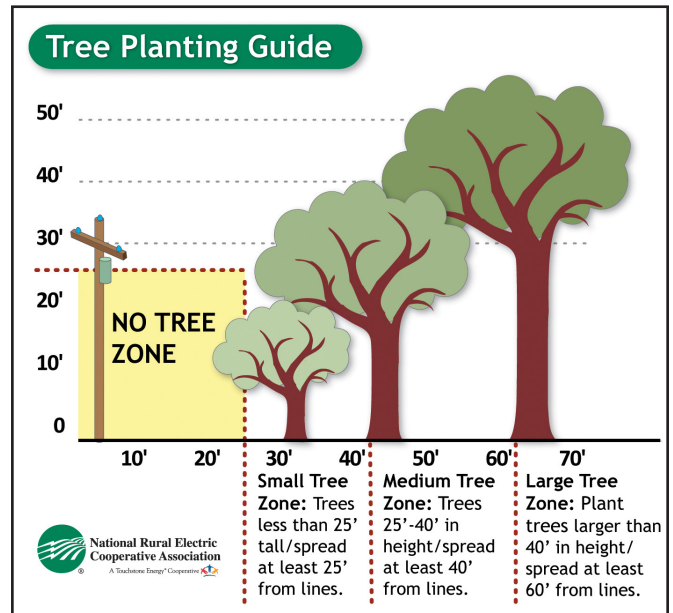
10401 Lystul Rd., P.O. Box 100, Rosholt, WI 54473
715-677-2211 • 800-377-2932 • www.cwecoop.com

Follow us on Twitter and Facebook  

Brenda Mazemke, Editor

GIVE TREES A CHANCE

Trees planted too close to power lines grow into a big problem. Follow the guide below when choosing trees that will be planted near power lines and you can prevent power outages, safety hazards, and additional costs that are incurred when trees are planted too close to the power lines and eventually require trimming or removal. Don't forget to call Digger's Hotline at 811 at least three business days before planting any trees or shrubs so that any underground lines can be located.




CWEC OFFERS BUSINESS LOANS

Utilizing funds received from USDA's Rural Economic Development program, Central Wisconsin Electric Co-op has established a Revolving Loan Fund (RLF) to assist with financing of new or expanding businesses. Low-rate loans ranging from \$5,000 to \$50,000 are available to qualifying businesses for expansion projects or start-ups. Loans are subject to credit approval and fund availability. For more information please contact the co-op.

Central Wisconsin Electric Cooperative is an equal opportunity provider.



Central Wisconsin Electric Cooperative

Your Touchstone Energy® Cooperative 

Board of Directors

Anthony Buss, Jr. – Chairman, District 1 • Tom Smith, Vice Chairman, District 1 • Sue Rombalski, Secretary–Treasurer, District 3
Ron Onesti, District 1 (At Large) • Lee Lehrer, District 2 • Leonard Oppor, District 2 • Elaine Eckendorf, District 3